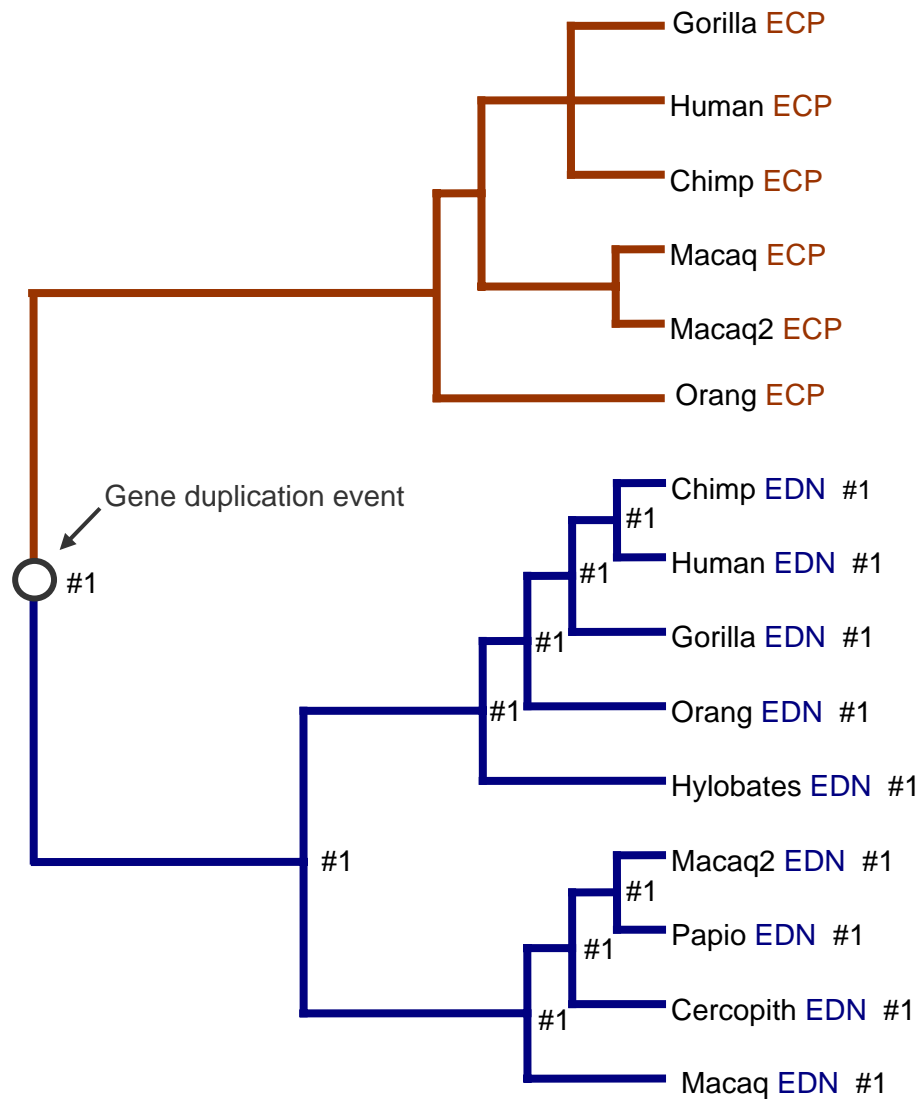


A**B**

```
(( (Hylobates_EDN #1, (Orang_EDN #1, (Gorilla_EDN #1, (Chimp_EDN
#1, Human_EDN #1) #1) #1) #1) #1, (Macaq_EDN #1, (Cercopith_EDN
#1, (Macaq2_EDN #1, Papio_EDN
#1) #1) #1) #1) #1, (Orang_ECP, ((Macaq_ECP, Macaq2_ECP), (Goril_ECP, Chim
p_ECP, Human_ECP))) );
```

Legend. (A) Is the 15 taxon gene-family tree. The paralogous EDN are indicated by the #1 symbol. The paralogous ECP lineages are treated as a separate clade that, by default, does not have to be specified in the tree file. Note that this tree has a basal dichotomy and is therefore rooted. (B) Is the same tree in the parenthetical notation required by codeml.